

# Venezia Glamour Shawl - Revised

**NOTE:** This is a revised version of the Venezia Glamour Shawl By Cheryl Beckerich, © 2014 Cascade Yarns - All Rights Reserved. It has been re-written to prevent the knitter from moving back and forth between different pages of instructions and to support charts.

**Difficulty:** Easy/Intermediate

**Finished Dimensions:** 80 inches wide, 21 inches long at center.

## **Materials:**

- 4 skeins Cascade Yarns Venezia Glamour, 65% Merino Wool, 30% Mulberry Silk, 5% Polyester 96 yds/87.5 m, 100 g/3.5 oz, Snow #05
  - This yarn is discontinued, but you may substitute any Bulky(7 wpi) weight yarn.
- Size 11 US/8 mm 36-60 inch circular needle or size needed to obtain gauge
- Stitch markers
- Tapestry needle

## **Gauge:**

8.5 sts and 12 rows= 4 inches.

## **Pattern Notes:**

The Venezia Glamour Shawl is a triangular shawl worked from the top down, with both center increases and increases on each side of the shawl. The bottom trim is worked with the RS facing and is joined together with the main body of the shawl by knitting the last trim stitch together with the adjacent st on the left needle, which is from the body of the shawl.

## **Abbreviations:**

- BO – Bind off.
- CO – Cast on.
- k – Knit
- k2tog – Knit 2 together.
- k2tog\* – Knit 2 together with the remaining stitch together with the adjacent shawl stitch.
- kfb – Increase by knitting into the front and the back of the stitch.
- m – Marker
- m1 – Make one by lifting the bar between the sts with the left needle from the front to the back, knit into the front of the lifted st. (NOTE: this is different from the typical m1L/m1R increases as it will make a stitch that appears as a yarn over)
- pm – Place Marker.
- p – Purl
- RS – Right Side of fabric.
- ssk – Slip 1 st as if to knit, slip the next stitch as if to knit, insert the left needle into the front of the 2 slipped stitches and knit together.
- WS – Wrong side of fabric.
- yo – Yarn over.

# Venezia Glamour Shawl - Revised

## PATTERN

NOTES: The Venezia Glamour Shawl is a triangular shawl worked from the top down, with both center increases and increases on each side of the shawl.

Lace pattern stitches are shown in brackets [ ] and wrong side rows are displayed in *italics*.

CO 6.

## SHAWL CHART 1

Row 1 WS: Kfb, p1, pm, p2, pm, p1, kfb – 8 sts.

Row 2: Kfb, k2, m1 (before m), k2, (after m) m1, k2, kfb. – 12 sts.

Row 3 and all WS rows: kfb, purl to the last st, kfb – 14 sts.

Row 4: Kfb, k5, m1, k2, m1, k5, kfb - 18 sts.

Row 6: Kfb, k8, m1, k2, m1, k8, kfb – 24 sts.

Row 8: Kfb, k1, [K1, (YO, K1) 3 times, SSK 3 times], m1, k2, m1, [SSK 3 times, (K1, YO) 3 times, K1], k1, kfb – 30 sts.

Row 10: Kfb, k3, [K1, (K1, YO) 3 times, SSK 3 times], k1, m1, k2, m1, k1, [SSK 3 times, (YO, K1) 3 times, K1], k3, kfb -36 sts.

Row 12: Kfb, k5, [K1, (YO, K1) 3 times, SSK 3 times], k2, m1, k2, m1, k2, [SSK 3 times, (K1, YO) 3 times, K1], k5, kfb – 42 sts.

Row 14: Kfb, k7, [K1, (K1, YO) 3 times, SSK 3 times], k3, m1, k2, m1, k3, SSK 3 times, (YO, K1) 3 times, K1, k7, kfb – 48 sts.

Row 16: Kfb, k9, [K1, (YO, K1) 3 times, SSK 3 times], k4, m1, k2, m1, k4, [SSK 3 times, (K1, YO) 3 times, K1], k9, kfb – 54 sts.

## SHAWL CHART 2

Row 18: Kfb, k1, [K10] twice, k5, m1, k2, m1, k5, [K10] twice, k1, kfb – 60 sts.

Row 20: Kfb, k3, [K10] twice, k6, m1, k2, m1, k6, [K10] twice, k3, kfb – 66 sts.

Row 22: Kfb, k5, [SSK 3 times, (K1, YO) 3 times, K1] twice, k7, m1, k2, m1, k7, [K1, (YO, K1) 3 times, SSK 3 times] twice, k5, kfb – 72 sts.

Row 24: Kfb, k7, [SSK 3 times, (YO, K1) 3 times, K1] twice, k8, m1, k2, m1, k8, [K1, (K1, YO) 3 times, SSK 3 times] twice, k7, kfb – 78 sts.

Row 26: [kfb] twice, k8, [SSK 3 times, (K1, YO) 3 times, K1] twice, k9, m1, k2, m1, k9, [K1, (YO, K1) 3 times, SSK 3 times] twice, k8, [kfb] twice- 86 sts.

# Venezia Glamour Shawl - Revised

## SHAWL CHART 3

Row 28: [kfb] twice, k1, [SSK 3 times, (YO, K1) 3 times, K1] 4 times, m1, k2, m1, [K1, (K1, YO) 3 times, SSK 3 times] 4 times, k1, [kfb] twice – 94 sts.

Row 30: [kfb] twice, k4, [SSK 3 times, (K1, YO) 3 times, K1] 4 times, k1, m1, k2, m1, k1, [K1, (YO, K1) 3 times, SSK 3 times] 4 times, k4, [kfb] twice – 102 sts.

Row 32: [Kfb] twice, k7, [K10] 4 times, k2, m1, k2, m1 k2, [K10] 4 times, k7, [kfb] twice- 110 sts.

## SHAWL CHART 4

Row 34: [Kfb] twice, [K10] 5 times, k3, m1, k2, m1, k3, [K10] 5 times, [kfb] twice – 118 sts.

Row 36: [Kfb] twice, k3, [K1, (YO, K1) 3 times, SSK 3 times] 5 times, k4, m1, k2, m1, k4, [SSK 3 times, (K1, YO) 3 times, K1] 5 times, k3, [kfb] twice – 126 sts.

Row 38: [Kfb] twice, k6, [K1, (K1, YO) 3 times, SSK 3 times] 5 times, k5, m1, k2, m1, k5, [SSK 3 times, (YO, K1) 3 times, K1] 5 times, k6, [kfb] twice – 134 sts.

Row 40: [Kfb] twice, k9, [K1, (YO, K1) 3 times, SSK 3 times] 5 times, k6, m1, k2, m1, k6, [SSK 3 times, (K1, YO) 3 times, K1] 5 times, k9, [kfb] twice – 142 sts.

## SHAWL CHART 5

Row 42: [Kfb] twice, k2, [K1, (K1, YO) 3 times, SSK 3 times] 6 times, k7, m1, k2, m1, k7, [SSK 3 times, (YO, K1) 3 times, K1] 6 times, k2, [kfb] twice – 150 sts.

Row 44: [Kfb] twice, k5, [K1, (YO, K1) 3 times, SSK 3 times] 6 times, k8, m1, k2, m1, k8, [SSK 3 times, (K1, YO) 3 times, K1] 6 times, k5, [kfb] twice -158 sts.

Row 46: [Kfb] twice, k8, [K10] 6 times, k9, m1, k2, m1, k9, [K10] 6 time, k8, [kfb] twice- 166 sts.

## SHAWL CHART 6

Row 48: [Kfb] twice, k1, [K10] 8 times, m1, k2, m1, [K10] 8 times, k1 [kfb] twice – 174 sts.

Row 50: [Kfb] twice, k4, [SSK 3 times, (K1, YO) 3 times, K1] 8 times, k1, m1, k2, m1, k1, [K1, (YO, K1) 3 times, SSK 3 times] 8 times, k4, [kfb] twice – 182 sts.

Row 52: [Kfb] twice, k7, [SSK 3 times, (YO, K1) 3 times, K1] 8 times, k2, m1, k2, m1, k2, [K1, (K1, YO) 3 times, SSK 3 times] 8 times, k7, [kfb] twice – 190 sts.

Row 54: [Kfb] twice, k10, [SSK 3 times, (K1, YO) 3 times, K1] 8 times, k3, m1, k2, m1, k3, [K1, (YO, K1) 3 times, SSK 3 times] 8 times, k10, [kfb] twice – 198 sts.

Row 55: kfb, purl until 1 st remains, kfb – 200 sts.

# Venezia Glamour Shawl - Revised

## **BOTTOM TRIM**

NOTE: The bottom trim is worked with the RS facing and is joined together with the main body of the shawl by knitting the last trim stitch together with the adjacent st on the left needle, which is from the body of the shawl. All k2tog\* are knit with the remaining stitch together with the adjacent shawl stitch.

Turn work and CO 4 sts using the knitted cast on method.

## **BOTTOM TRIM CHART**

Row 1: K1, yo, k2tog, yo, k2tog\*, turn.

Row 2: P5

Row 3: K1, yo, k2tog, yo, k1, k2tog\*, turn.

Row 4: P6

Row 5: K1, yo, k2tog, yo, k2, k2tog\*, turn.

Row 6: P7

Row 7: K1, yo, k2tog, yo, k3, k2tog\*, turn

Row 8: P8

Row 9: BO4, k2, k2tog\*, turn.

Row 10: P4

Each 10 rows of the bottom trim will join together with 5 of the existing shawl stitches. Repeat these 10 rows until all of the shawl stitches are worked together with the trim.

BO remaining stitches.

## **FINISHING**

With tapestry needle, work in all ends.

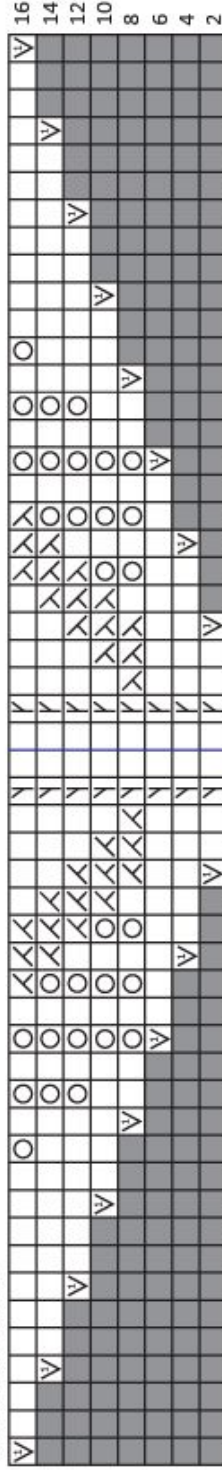
Block shawl by damping with cool water and lay flat to dry.

# Venezia Glamour Shawl - Revised

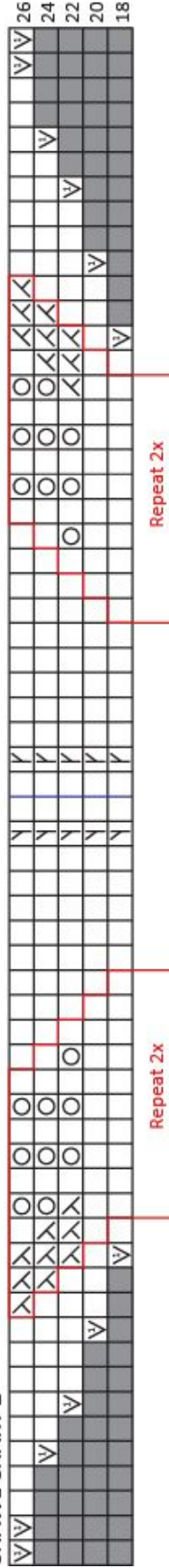
**LEGEND**

<input type="checkbox"/>	Knit on RS / Purl on WS	<input type="checkbox"/>	SSK - Slip, Slip, Knit
<input type="checkbox"/>	Kfb - knit in front & back of stitch	<input type="checkbox"/>	K2tog - knit 2 together
<input type="checkbox"/>	Yarn Over	<input type="checkbox"/>	K2tog - knit 2 together with the remaining stitch together with the adjacent shawl stitch
<input type="checkbox"/>	M1(R) - Make 1 right leaning	<input type="checkbox"/>	Bind-Off
<input type="checkbox"/>	M1(L) - Make 1 left leaning		

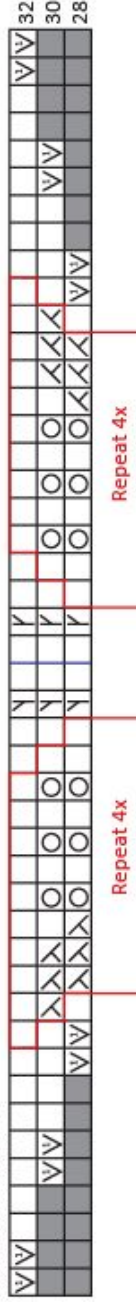
SHAWL CHART 1



SHAWL CHART 2

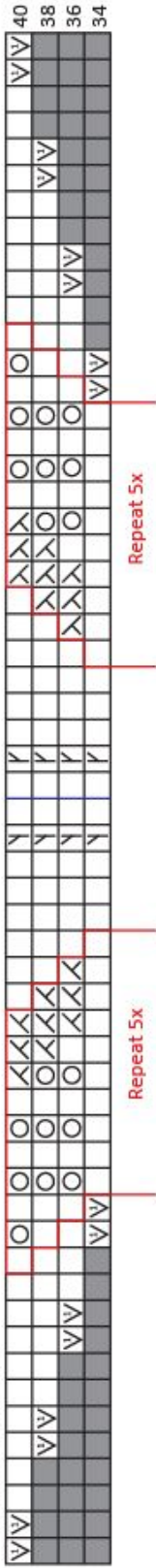


SHAWL CHART 3

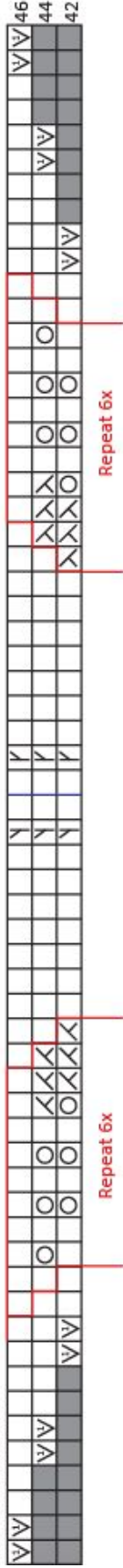


# Venezia Glamour Shawl - Revised

SHAWL CHART 4



SHAWL CHART 5



SHAWL CHART 6



BOTTOM TRIM BORDER

